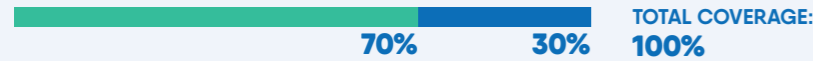


EXCLUSIVE SAVINGS FROM STUDENTCARE NETWORK PARTNERS*

SAVING YOU MORE MONEY!

- Your Coverage**
You're covered for the insured portion of your Plan regardless of the health-care practitioner you choose.
- Using the Studentcare Networks**
By consulting a Network member, you'll get additional coverage.

Here is an example of a claim made using a Studentcare Dental Network practitioner:



greiche & scaff

15% OR \$100 OFF*

a complete pair of prescription eyeglasses or sunglasses (frames and lenses)

*The higher discount will apply.



\$50 OFF/EYE

on Standard LASIK*

\$100 OFF/EYE

on Custom LASIK*

*Certain conditions apply.

Discover more partners online!
Dentists, physiotherapists, and chiropractors



NEW! VIRTUAL HEALTH CARE*

Discover Dialogue, a virtual platform that allows students and dependants covered by the SSMU Health Plan to connect with nurses and physicians via a mobile or web app from anywhere in Canada.

Find out more at dialogue.co/signup-studentcare

*For details, see www.studentcare.ca.

*Studentcare and the insurers do not endorse or assume any responsibility with respect to the use of their services.

Studentcare Montreal Vision Network

\$70

eye exams*

\$75 OFF

prescription eyeglasses (frames and lenses)

*Certain conditions apply.



\$30 DISCOUNT

on a regular 50-minute adult therapy or coaching session

QUESTIONS? CONTACT US



Care Centre
1200 McGill College Avenue
Suite 2200
Montreal, Quebec H3B 4G7
514-789-8775
www.studentcare.ca



NOTE: This document provides a summary of Plan benefits. It is not a complete description of coverage, restrictions, and exclusions. Please visit www.studentcare.ca to learn about all the applicable conditions and exclusions.

THE MOST POPULAR COVERAGE ON CAMPUS

As an undergraduate student in the Fall Term at McGill University and a member of SSMU who is paying tuition fees at either Canadian or Quebec rates, you have access to one of the most important services on campus, the SSMU Student Health & Dental Plan. It covers many benefits not provided by provincial health-care programs, like vision care, dental care, and travel care abroad. International undergraduate students beginning in the Fall Term are automatically covered by the Dental Plan only. Visit www.studentcare.ca for more details on eligibility.

We invite you to verify if you're already covered by another plan (through an employer, parent, or spouse). If so, the student Plan can still be of interest to you, as you can be reimbursed the remaining eligible fees (partially or fully) through your secondary plan.



Desjardins Insurance
PO Box 3950
Levis, Quebec G6V 8C6
1-866-647-5013
Health, vision, and dental benefits are insured by Desjardins Insurance.
Group Number: Q1103
Desjardins Insurance refers to Desjardins Financial Security Life Assurance Company.



Blue Cross
PO Box 1046, Stn. Main
Winnipeg, Manitoba R3C 2X7
1-866-601-2583 (toll-free): Canada/United States
0-204-775-2583 (collect): other countries
Travel coverage is administered by Blue Cross.
Group Number: 97180
Blue Cross designates Blue Cross Life Insurance Company of Canada.

Please note that Dialogue is not an insurance product. To determine if this product is right for you, for more details, or to contact a licensed insurance representative, visit www.studentcare.ca.



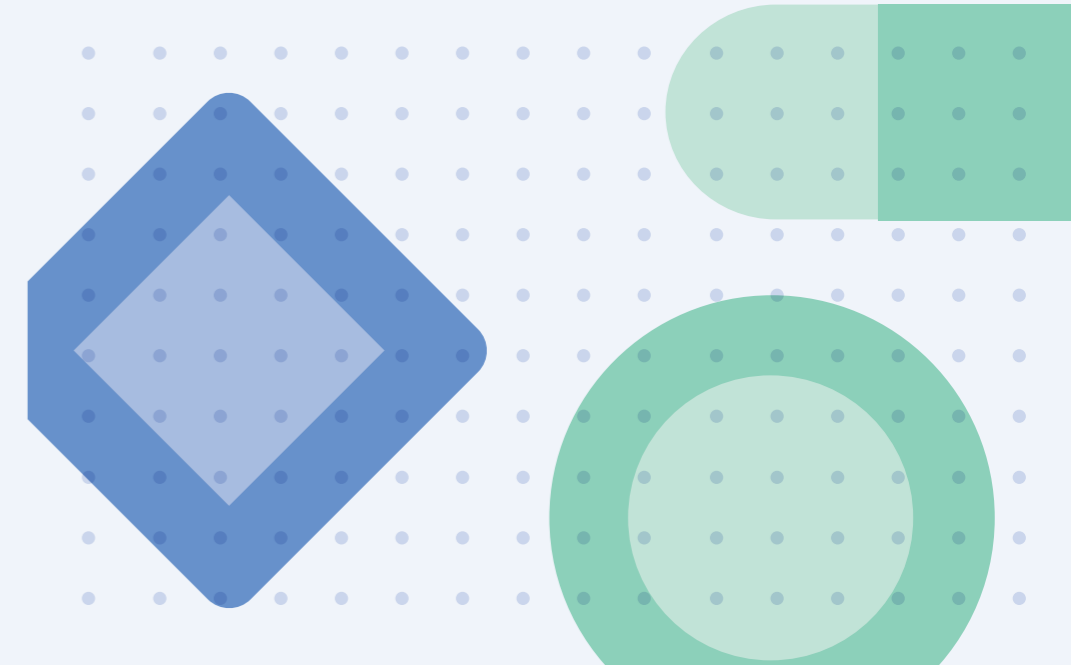
OUR ENVIRONMENTAL COMMITMENT ON PAPER
This document contains 100% post-consumer fibre, Certified EcoLogo, Processed Chlorine Free, and FSC® Certified Recycled. Manufactured using biogas energy.



Students' Society of McGill University

2020-2021 YOUR SSMU STUDENT HEALTH & DENTAL PLAN

Make the most out of it



PROVIDING QUALITY COVERAGE

HEALTH PLAN



HEALTH
OVER \$10,000

Prescription drugs
Vaccinations
Psychologists
Physiotherapists

Chiropractors
Ambulance
and more!



VISION
OVER \$250

Eye exam
Eyeglasses and contact lenses
Laser eye surgery

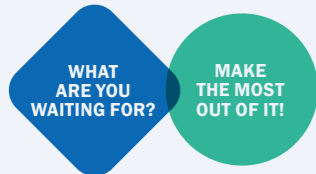
TRAVEL PLAN



CARE ABROAD
UP TO \$5,000,000

120 days per trip, up to \$5,000,000 per lifetime (NEW: includes eligible COVID-19 medical expenses), trip cancellation and trip interruption in the event of a medical emergency or an eligible Travel Advisory

FOR A COMPLETE DESCRIPTION OF YOUR COVERAGE AND TO OBTAIN YOUR CERTIFICATE NUMBER, VISIT WWW.STUDENTCARE.CA.



DENTAL PLAN



DENTAL
UP TO \$750

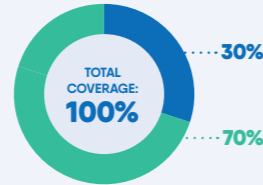
Checkups
Fillings
Extractions

Cleanings
Root canals
and more!

- Insured Portion
- Studentcare Dental Network Savings

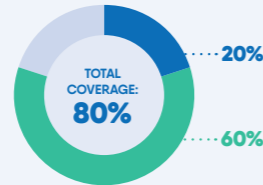
Preventive Services

- Recall exams
- Cleanings
- Impacted wisdom teeth extractions



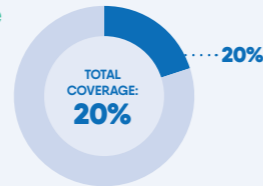
Basic Services

- Fillings
- Oral surgery
- Endodontics (root canals)
- Periodontics (gum treatments)



Major Restorative

- Crowns
- Bridges
- Posts



AT A GREAT PRICE

CHECK IT OUT!



*This is an annual Plan. Students will therefore be covered for one year.

If you're eligible, the Plan fee for coverage from Sept. 1 – Aug. 31 will be automatically included in your tuition and other fees. New students who enrol themselves in the Winter Term pay a pro-rated fee for coverage until Aug. 31. Visit www.studentcare.ca for more details.

INTRODUCE ME TO YOUR FAMILY

Enrol loved ones for less

You can enrol your family (spouse and/or dependent children) each year by paying an additional fee, over and above your fee as a member of the Plan. Common law couples are eligible. Visit www.studentcare.ca for instructions.

+1 Add one dependant for
\$345
for full-year coverage*

∞ Add unlimited dependants for
\$690
for full-year coverage*

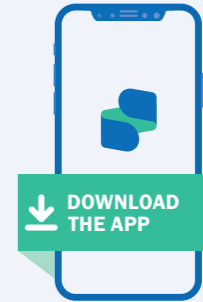
*Family enrolment fees for coverage from Jan. 1 – Aug. 31, 2021 for new Winter Term students are available at www.studentcare.ca.

THE EASE OF CLAIMING AT YOUR FINGERTIPS

QUICK CLAIMING & REIMBURSEMENT

Five Easy Steps:

- Create a profile.
- Take a picture of your receipt with your device.
- Send it to your insurer via the app.
- Wait for your claim to be quickly processed.
- Receive a refund by direct deposit.



Search **Studentcare mobile** to download now!



Claim forms are also available online at www.studentcare.ca.

CHANGE-OF-COVERAGE AND OPT-OUT PERIODS

- Fall Term (enrolments and opt outs):
Aug. 23 – Sept. 29, 2020*
- Winter Term (enrolments for new students only):
Jan. 18 – Feb. 1, 2021

The Plan is a non-mandatory automatic contribution.

***Early Bird!** If you complete your opt out before **Aug. 28**, you can have the Plan fee reversed from your student account before the tuition fee payment deadline.

All opt outs or coverage changes can be completed online at www.studentcare.ca. You can choose between an annual or a permanent opt out.

VISIT
WWW.STUDENTCARE.CA