

## ALL YOU NEED TO KNOW ABOUT COVERAGE CHANGES

### WHAT IF I'M ALREADY COVERED?

**3 reasons** to stick with your student Plan:

- 1 Your parent's insurance plan could stop covering you completely if you're a part-time student over 21, or a full-time student over 25.
- 2 Most plans don't offer coverage for vaccinations, travel, or vision, but your student Plan covers those benefits—and for much less!
- 3 You can combine plans to maximize your overall coverage—up to 100%.

### FAMILY ENROLMENTS

You can enrol your family (spouse and/or dependent children) each year by paying an additional fee, over and above your fee as a member of the Plan. Common law and same-sex couples are eligible. Visit [www.studentcare.ca](http://www.studentcare.ca) for instructions.



**ADD ONE DEPENDANT FOR \$393.00 FOR FULL-YEAR COVERAGE\***



**ADD UNLIMITED DEPENDANTS FOR \$655.00 FOR FULL-YEAR COVERAGE\***

\*Family enrolment fees for coverage from Jan. 1 – Aug. 31, 2018 for new Winter semester students are available at [www.studentcare.ca](http://www.studentcare.ca).

### OPTING OUT

- 1 Use the secure online opt-out processing system at [www.studentcare.ca](http://www.studentcare.ca) to opt out of the health portion, the dental portion, or the Plan in its entirety.
- 2 Upload proof of your alternative health and/or dental coverage (such as a copy of your benefits card or a letter from your parent's or spouse's employer).
- 3 Receive a cheque for the amount of the Plan shortly after the Change-of-Coverage Period.

### WHEN CAN I CHANGE MY COVERAGE?

► Fall semester (enrolments and opt outs):  
**SEPT. 11 – 29, 2017**

► Winter semester (enrolments for new students only):  
**JAN. 10 – 24, 2018**

## THE EASE OF CLAIMING AT YOUR FINGERTIPS

### QUICK CLAIMING & REIMBURSEMENT

Submit your claims quickly and securely through your smartphone!

Search **Studentcare mobile** to download the app now.



### NEW EMPOWER ME: FREE MENTAL HEALTH RESOURCES

CONNECT WITH CONSULTANTS, COUNSELLORS, AND LIFE COACHES 24/7 FROM ANYWHERE IN NORTH AMERICA. VISIT [STUDENTCARE.CA](http://STUDENTCARE.CA) FOR MORE INFO.

Powered by Aspiria

### SAVE MORE MONEY!

**Your Plan Coverage**  
You're covered for the insured portion of your Plan regardless of the licensed health practitioner you choose.

**Using the Studentcare Networks**  
By consulting a Network member, you'll get additional coverage.

Example of a claim made using a Studentcare Dental Network practitioner:



### EXCLUSIVE SAVINGS FROM NETWORK PARTNERS



**\$50 OFF**  
PER EYE ON STANDARD LASIK\*

**\$100 OFF**  
PER EYE ON CUSTOM LASIK\*

\*Certain conditions apply



WITH COUPON CODE [STUDENTCARE17](http://STUDENTCARE17):

**10% OFF**  
CONTACT LENSES

**25% OFF**  
EYEGLASSES (EXCLUDING OAKLEY AND ARNETTE BRANDS)

and more!

DENTISTS, PHYSIOTHERAPISTS,  
MASSAGE THERAPISTS,  
AND CHIROPRACTORS

Independent  
vision specialists

**30% OFF**  
PRESCRIPTION EYEGLASSES, UP TO \$75

DISCOUNTS ON EYE EXAMS  
AND CONTACT LENSES



PREFERRED RATES ON  
50-MINUTE ADULT THERAPY  
OR COACHING SESSIONS



**10% OFF PRESCRIPTION DRUG COSTS**  
(UP TO A MAX OF \$40) AT PARTICIPATING  
LOCATIONS\*

**20% OFF SELECT REGULARLY PRICED  
REXALL BRAND NON-PRESCRIPTION  
PRODUCTS**

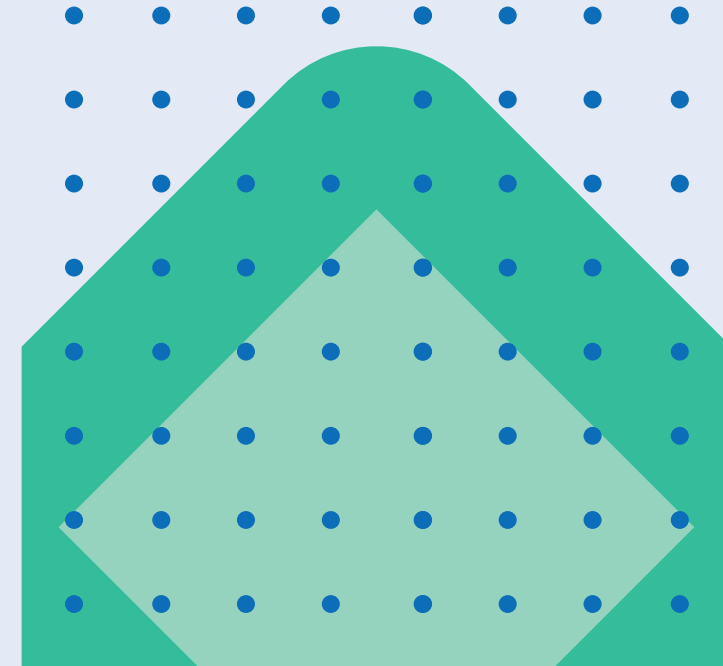
\*Please see website for details.

STUDENTCARE\_INFO-GUIDE\_ACADSA\_09-17



2017-2018

## YOUR ACADSA STUDENT HEALTH & DENTAL PLAN



Make the most out of it

## ALL YOU NEED TO KNOW ABOUT YOUR PLAN

### WHAT IS A HEALTH AND DENTAL PLAN?

- Extended health and dental coverage that fills the gaps in provincial health care and other basic health-care programs
- Service provided by your students' association, ACADSA, and administered by Studentcare, the leading provider of student health and dental plans in Canada

### WHO'S COVERED?

All full-time students (registered for at least 9 credits) in the Fall semester who are ACADSA members are automatically covered by the ACADSA Health & Dental Plan.

Certain exceptions exist. Please check your student account to confirm if you have been charged the Plan fees.

The following students may be eligible to enrol themselves in the Plan:

- Part-time students
- New Winter semester students

Find out more at [www.studentcare.ca](http://www.studentcare.ca).

### HOW MUCH DOES IT COST?

HEALTH & DENTAL PLAN COMBINED ANNUAL FEE  
**\$262.00**

HEALTH PLAN ANNUAL FEE  
**\$120.00**

DENTAL PLAN ANNUAL FEE  
**\$142.00**

If you're eligible, the Plan fee for coverage from Sept. 1 – Aug. 31 will be automatically included in your tuition and other fees. New students who enrol themselves in the Winter semester pay a pro-rated fee for coverage until Aug. 31. Visit [www.studentcare.ca](http://www.studentcare.ca) for more details.

### WHAT ARE MY GROUP NUMBERS?

- ▶ Health, vision, and dental:  
**22392** (insured by Sun Life Assurance Company of Canada)
- ▶ Travel:  
**97180** (administered by Blue Cross)

## HEALTH & DENTAL PLAN BENEFITS

### HEALTH – MORE THAN \$10,000



Health Coverage	Per Visit / Purchase	Per Policy Year
<b>PRESCRIPTION DRUGS</b>	<b>80%</b>	
<b>NON-PRESCRIPTION VACCINATIONS</b>	<b>80%</b>	<b>\$150</b>
<b>PRESCRIPTION VACCINATIONS</b>	<b>80%</b>	
<b>PSYCHOLOGIST</b> Requires a referral from an MD.	<b>\$20</b>	<b>\$300</b>
<b>MASSAGE THERAPIST</b> Requires a referral from an MD.	<b>\$20</b>	<b>\$300</b>
<b>CHIROPRACTOR</b> Includes one x-ray per policy year.	<b>\$20</b>	<b>\$300</b>
<b>PHYSIOTHERAPIST</b>	<b>\$20</b>	<b>\$300</b>
<b>NATUROPATH</b>	<b>\$20</b>	<b>\$300</b>
<b>OSTEOPATH</b> Includes one x-ray per policy year.	<b>\$20</b>	<b>\$300</b>
<b>REGISTERED DIETITIAN</b> Requires a referral from an MD.	<b>\$20</b>	<b>\$300</b>
<b>PODIATRIST/CHIROPODIST</b> Includes one x-ray per policy year.	<b>\$20</b>	<b>\$300</b>
<b>SPEECH THERAPIST</b>	<b>\$20</b>	<b>\$300</b>

**PLUS: DIAGNOSTIC SERVICES, HOME NURSE, TUTORIAL BENEFIT, AMBULANCE, DENTAL ACCIDENT, MEDICAL EQUIPMENT, AND MORE.**

### VISION – UP TO \$275



Vision Coverage	Amount Covered	Eligible Every
<b>EYE EXAM</b> Must be performed by a licensed optometrist.	<b>\$50</b>	<b>2 POLICY YEARS</b>
<b>EYEGLASSES AND CONTACT LENSES</b> Receipts must include the prescribed strength, or provide the detailed prescription. Includes coverage for safety glasses.	<b>\$75</b>	<b>24 MONTHS</b>
<b>LASER EYE SURGERY</b>	<b>\$150</b>	<b>1 POLICY YEAR</b>

Visit [www.studentcare.ca](http://www.studentcare.ca) for complete details.

### DENTAL – UP TO \$750



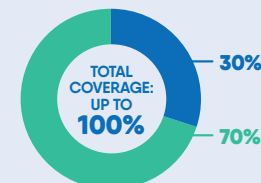
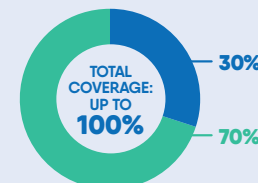
- Insured Portion
- Studentcare Dental Network Savings

#### PREVENTIVE SERVICES

- Recall exams
- Cleanings
- Extraction of impacted teeth

#### BASIC SERVICES

- Fillings
- Oral surgery
- Root planing

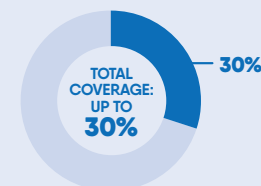
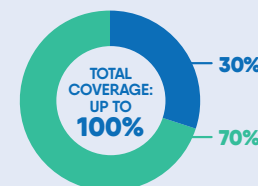


#### BASIC SERVICES

- Endodontics (root canals)
- Periodontics (gum treatments)

#### MAJOR RESTORATIVE

- Crowns
- Bridges
- Posts



### TRAVEL – UP TO \$5,000,000



Travel Coverage	Amount Covered	Eligible
<b>TRAVEL HEALTH COVERAGE</b> Visit <a href="http://studentcare.ca">studentcare.ca</a> to find out how you can extend coverage for a student exchange/internship.	<b>120 DAYS</b>	<b>PER TRIP</b>
<b>MEDICAL INCIDENT</b> In case of a medical emergency.	<b>\$5,000,000</b>	<b>PER INCIDENT</b>
<b>TRIP CANCELLATION</b> Pre-paid, non-refundable trip expenses in case of a medical emergency.	<b>\$1,500</b>	<b>PER TRIP</b>
<b>TRIP INTERRUPTION</b> In case of a medical emergency.	<b>\$5,000</b>	<b>PER TRIP</b>

QUESTIONS?

STUDENTCARE.CA / TOLL-FREE: 1 866 358-4433